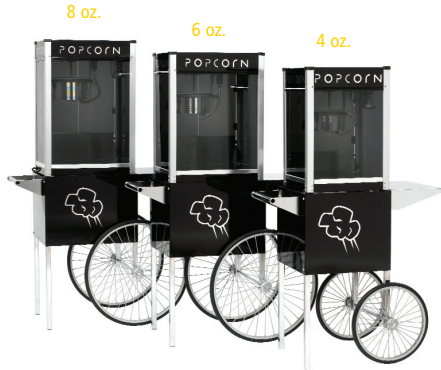




# Contempo Pop

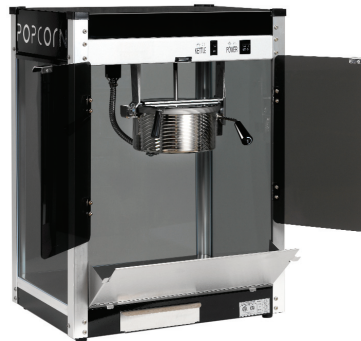


The life of the party! Our streamlined Contempo Pop machines have a modern look well suited for many business, clubs, bars and homes. The gloss black cabinet has clean, bold graphics and smoked glass side panels. These full-featured machines are easy to use and easy to maintain.



## CONTEMPO POP 4 OZ.

- Pops 92 one-ounce servings per hour. Perfect for the game room!



## CONTEMPO POP 6 OZ.

- Pops 113 one-ounce servings per hour. Fits right on the counter top.



## CONTEMPO POP 8 OZ.

- Pops 147 one-ounce servings per hour. Our most popular size.

### Three-year Warranty Program

All of our machines are covered with a three-year warranty – the best in the business.

Standards: (ETL tested to) UL 197 • CSA 22.2 No. 9 • NSF 4 • CE

Part #	Model	Description	Volts	Watts	Amps	Output/hr	Dimensions	Wt. (in lbs.)
1104220	CP-4	4 ounce popper	120	1200	10	92 oz.	16" w x 14" d x 24" h	50
1204220	CP-4	4 ounce popper	240	1200	10	92 oz.	16" w x 14" d x 24" h	50
1106220	CP-6	6 ounce popper	120	1200	10	113 oz.	20" w x 14" d x 26" h	60
1206220	CP-6	6 ounce popper	240	1200	10	113 oz.	20" w x 14" d x 26" h	60
1108220	CP-8	8 ounce popper	120	1420	12	147 oz.	20" w x 14" d x 29" h	64
1208220	CP-8	8 ounce popper	240	1420	12	147 oz.	20" w x 14" d x 29" h	64
3080020	Small	Contempo Popcorn Cart	-	-	-	-	16" w x 34" d x 30" h	46
3070020	Medium	Contempo Popcorn Cart	-	-	-	-	16" w x 38" d x 30" h	58



manufactured fun

PARAGON

# Features



## **High-output, Hard-coat Anodized Aluminum Kettle**

Poppers feature high output, hard-coat anodized aluminum kettles for optimum performance and easy cleaning. We only use aluminum because it has the highest heat transfer rate of any approved cooking material. Then we hard-coat anodize the kettles to create a non-stick surface that's a snap to clean – just wipe with a damp cloth.



## **Side-hinged Kettle**

Our side-hinged kettles are simple to operate and maintain. This design facilitates routine cleaning because you can reach all parts of the kettle. Just wipe it with a damp cloth regularly and you'll eliminate most of the baked-on carbon that is so common in oil-based cooking appliances. With less carbon build-up, your machine will heat faster and work more efficiently. Ordinary poppers with center pivot kettles build up baked-on carbon quickly and require time-consuming, difficult disassembly for cleaning.



## **Sturdy Cabinet Construction**

Our cabinets feature aluminum extruded side post construction so they have superior structural integrity. The extrusions are designed to withstand heavy commercial use without damage. Channels inside the side posts protect wiring from oil residues that cause electrical shorts and operation interruptions. Tempered glass side panels slide right into the channels. All metal on the cabinet is finished with powder-coated paint that resists chipping.



## **Stainless Steel Foodzone and Tempered Glass Panels**

The stainless steel bottom trays, drop doors and old-maid drawers are removable for quick cleaning. Just put them in the dishwasher or hand wash them with any mild detergent. Tempered glass side and back panels are designed for safety and easy cleaning – just wipe with a standard glass cleaner.



## **Built-in Warming Deck**

All of our Contempo Pop line poppers incorporate a 50-watt heating element underneath the bottom tray. Since heat rises, bottom heating is better than heat lamps that only warm the top layer of popcorn. Our bottom-heating element keeps all the popcorn in the cabinet warm and at the ideal serving temperature. Depending on the humidity level, popcorn can stay fresh all day if kept at the right temperature.



## **Old Maid Drawer**

A stainless steel drawer built into the base of the popper collects the unpoppered kernels, or "old maids." The small holes in the tray allow the old maids to fall through, while keeping the fully popped corn in the serving cabinet. It's simple to remove the drawer for emptying and cleaning.



## **Presentation Lamp**

A 50-watt R20 lamp lights the cabinet interior and highlights the popped corn for added impulse sales. The light also provides extra safety and convenience because the operator can see the kettle clearly for loading and unloading.



manufactured fun

P A R A G O N